



29 NOV – 3 DEC 2017
sailmelbourne.com.au



SAIL MELBOURNE INTERNATIONAL SAILING INSTRUCTIONS

November 29th – December 3rd 2017



ROYAL
BRIGHTON
YACHT CLUB

Organising Authority: Australian Sailing inc. (AS). With all racing conducted from Royal Brighton Yacht Club (RBYC). With support from Victorian partner clubs - Black Rock Yacht Club, Mordialloc Sailing Club, McCrae Yacht Club, Royal Brighton Yacht Club, Sandringham Yacht Club, Royal Yacht Club of Victoria, Hobson's Bay Yacht Club and Sorrento Sailing and Couta Boat Club.

[DP] denotes a rule for which the penalty is at the discretion of the Jury.

[NP] denotes that a breach of this rule will not be grounds for a protest by a boat. This changes RRS 60.1(a).

[SP] denotes a rule for which a standard penalty may be applied by the race committee without a hearing"

1 RULES

- 1.1 The regatta will be governed by the rules as defined in The Racing Rules of Sailing (RRS).
- 1.2 The Australian Sailing Prescriptions do not apply for non-Australian entries
- 1.3 If there is a conflict between languages the English text will take precedence.
- 1.4 RRS Appendix P, Special Procedures for Rule 42, will apply.
- 1.5 RRS Appendix F and SI Addendum F will apply for Kite Board Racing:

2 NOTICES TO COMPETITORS

The official Sail Melbourne International notice board will be located at www.sailmelbourne.com.au. Notices will also be posted on a board located on the balcony of the RBYC.

3 CHANGES TO SAILING INSTRUCTIONS

- 3.1 Any change to the format or schedule of races will be posted by 20:00 on the day before it will take effect and any change to the sailing instructions will be posted before 09:00 on the day it will take effect.
- 3.2 Any reassignment of classes to course areas will be posted before 09:00 on the day it will take effect, or if flag AP is displayed ashore, 30 minutes before flag AP for that class is removed.
- 3.3 When any SI Addendum is changed, an updated version of it will be posted on the Official Notice Board.
- 3.4 Any change to the Sailing Instructions will be approved by the Principal Race Officer.

4 SIGNALS MADE ASHORE

- 4.1 Signals made ashore will be displayed at the flag masts located in the southern corner of the Royal Brighton Yacht Club yard.
- 4.2 When flag AP is displayed ashore, '1 minute' is replaced with 'not less than 30 minutes' in the race signal AP. This changes race signal AP.

(DP) Flag AP over H displayed ashore means 'Boats shall not leave the harbour. Wait for further instructions.' This adds to Race Signals.

5 FORMAT OF RACING

The format is a Single Series. If the race committee deems it necessary to split a class into fleets, then separate instructions will be issued.

6 SCHEDULE OF RACES

- 6.1 The total number of races scheduled is as per the Event Schedule NOR Attachment A:
- 6.2 The daily race schedule and the scheduled time of the warning signal for the first race is shown in SI

Addendum "C".

- 6.3 The warning signal for each succeeding race will be made as soon as practicable after the completion of the previous race.
- 6.4 To alert boats that a race or sequence of races will begin soon, the orange starting line flag will be displayed with one sound for at least five minutes before a warning signal is displayed.
- 6.5 On the last scheduled day of racing, no warning signal will be made after 1700.

7 CLASS FLAGS

Class flags will be the class insignia on the following background.

<u>Class</u>	<u>Class Insignia</u>	<u>Background Colour</u>
International 470	470	White
Finn	Finn	Light Blue
Laser Standard	Laser	White
Laser Radial (open)	Red	Green
49er	49er	White
49er FX	FX	Light Blue
RSX (9.5m ²) & (8.5m ²)	RSX	Light Blue
Nacra 17	Nacra	White
2.4mR	2.4	White
Laser 4.7	Red	Yellow
International 420	420	White
International 29er	29er	Red
Nacra 15	Nacra	White
Optimist (open)	Optimist	White
Optimist (intermediate)	Optimist	Blue
Open Bic (open)	Open Bic	White
Bic Techno	Bic Techno	White
Sabre	Sabre	White
Etchells	Etchells	White
IKA Foiling Kite	Kite	Blue

8 RACING AREAS

SI Addendum "A" shows the approximate location of the racing areas.

9 THE COURSES

- 9.1 The diagrams in SI Addendum "B" show the courses, the course designations, the approximate angles between legs, the order in which marks are to be passed, and the side on which each mark is to be left.
- 9.2 No later than the warning signal, the race committee signal boat will display the course designation and the approximate compass bearing of the first leg.
- 9.3 If one of the gates marks are not laid, then the laid mark must be left to port.

10 MARKS

Refer to SI Addendum E

11 THE START

- 11.1 The starting line will be between a staff displaying an orange flag on the race committee vessel at the starboard end and either:

- (a) the course side of the port-end inflatable starting mark, or
- (b) a staff displaying an orange flag on the race committee vessel at the port end.

11.2 [DP] A buoy may be attached to the race committee starting boat. Boats shall not pass between this buoy and the race committee starting boat at any time.

11.3 [DP] Boats whose warning signal has not been made shall avoid the starting area during the starting sequence for other classes. The starting area is defined as a rectangle 50 meters from the starting line and marks in all directions.

11.4 A boat that does not start within 4 minutes after her starting signal will be scored Did Not Start without a hearing. This changes RRS A4 and A5.

12 CHANGE OF THE NEXT LEG OF THE COURSE.

To change the next leg of the course, the race committee will lay a new mark (or move the gate) (or move the finishing line) and remove the original mark as soon as practicable. When in a subsequent change a new mark is replaced, it will be replaced by an original mark.

13 THE FINISH

The finishing line will be between a staff displaying a Blue flag on the race committee vessel and either:

- (a) the course side of the nearby inflatable finishing mark, or
- (b) a staff displaying a Blue flag on the nearby race committee vessel.

14 PENALTY SYSTEM

For the Nacra 17, Nacra 15, 49er, 49erFX, and International 29er events, RRS 44.1 and RRS P2.1 are changed so that the Two-Turns Penalty is replaced by the One-Turn Penalty.

15 TIME LIMITS AND TARGET TIMES

15.1 Time limits and target times are as follows:

<u>Class</u>	<u>Time Limit</u>	<u>Mark 1 Time Limit</u>	<u>Finish Window</u>	<u>Target Time</u>
470, Laser, Laser Radial, Laser 4.7 Finn, 420, Sabre, Etchells	75	25	15	50
49er, 49er FX, Nacra17, 29er, Nacra15, Optimist, Open Bic,	50	20	10	30
IKA Kite Board	30	10	10	12
RSX, Bic Techno, 2.4mR	45	20	10	20 - 25

15.2 If no boat has passed Mark 1 within the Mark 1 Time Limit the race will be abandoned. Failure to meet the target times will not be grounds for protest. This changes RRS 35, A4 and A5.

15.3 Boats failing to finish within the time stated in the Finish Window after the first boat sails the course and finishes will be scored Did Not Finish. This changes RRS 35, A4 and A5.

16 PROTESTS AND REQUESTS FOR REDRESS

16.1 Protest forms are available at the regatta office, located within the "Jock Sturrock" building. Protests and requests for redress or reopening shall be delivered there within the appropriate time limit.

16.2 For each class, the protest time limit is 90 minutes after the last boat has finished the last race of the day or 90 minutes after AP/A or N/A has been displayed.

- 16.3 Notices will be posted no later than 30 minutes after the protest time limit to inform competitors of hearings in which they are parties or named as witnesses. Hearings will be held in the protest room, located at Royal Brighton Yacht Club beginning at the time posted. Hearings may be scheduled to begin up to 30 minutes before the end of protest time.
- 16.4 Notices of protests by the race committee, technical committee or protest committee will be posted to inform boats under RRS 61.1 (b).
- 16.5 A list of boats that have been penalized under Appendix P for breaking RRS 42 will be posted.
- 16.6 Penalties for breaches of NoR 15 (Berthing), NoR 16 (Haul-Out Restrictions), NoR 17 (Diving Equipment and Plastic Pools), NOR 22 (Media Rights), and SIs marked [DP], are at the discretion of the protest committee. A boat may accept a discretionary penalty before a hearing concerning the same incident by completing a form available at the jury office.
- 16.7 Breaches of NoR 15 (Berthing), NoR 16 (Haul-Out Restrictions), NoR 17 (Diving Equipment and Plastic Pools), NOR 22 (Media Rights), and rules in the SIs marked [NP] will not be grounds for a protest by a boat. This changes RRS 60.1 (a).
- 16.8 For breaches of the SIs marked [SP], the race committee may apply a standard penalty without a hearing. A list of these breaches and the associated standard penalties will be posted on the Official Notice Board. However, the race committee may protest a boat when they consider the standard penalty to be inappropriate. This changes RRS 63.1 and Appendix A5.
- 16.9 On the last scheduled day of racing, a request for reopening a hearing shall be delivered
- (a) within the protest time limit if the requesting party was informed of the decision on the previous day;
 - (b) no later than 30 minutes after the requesting party was informed of the decision on that day.
- This changes RRS 62.2.
- 16.10 Decisions of the International Jury will be final as provided in RRS 70.5.

17 ARBITRATION

- 17.1 An arbitration hearing may be conducted for all protests lodged in accordance with RRS 61 which allege an infringement of a rule of Part 2 or 4 or Rule 31. Such hearings will be held subsequent to the protest being lodged and prior to a hearing. Hearings will be in accordance with RRS Appendix T.
- 17.2 The race score for a boat that takes a Scoring Penalty shall be the score she would have received without a penalty, made worse by adding the number of places equal to 30% of the difference between her finishing position score and the score for Did Not Finish rounded to the nearest whole number (0.5 rounded upward). The scores of other boats shall not be changed; therefore, two boats may receive the same score. However, the penalty shall not cause the boat's score to be worse than the score for Did Not Finish."

18 SCORING

- 18.1 The Low Point System of RRS Appendix A will apply
- 18.2 Three races are required to be completed to constitute a regatta
- 18.3 When 4 or more races have been completed, a boat's regatta score will be the total of her race scores excluding her worst score.
- 18.4 The scoring abbreviation for a discretionary penalty imposed under SI 16.6 will be DPI.

18.5 To request correction of an alleged error in posted race or regatta results, a boat may complete a scoring enquiry form available at the race office.

19 [DP] [NP] SAFETY REGULATIONS

19.1 [SP] Competitors shall wear personal flotation devices in accordance with NoR 1.4 at all times while afloat, except briefly while changing or adjusting clothing or personal equipment.

The use of helmets for Nacra 15 (conforming to EN1385 standard) for both helm and crew is mandatory during racing.

19.2 Boats not leaving the harbour for a scheduled race shall promptly notify the Race Office.

19.3 [SP] Before leaving to race on each scheduled racing day, a crew shall sign-out on the Race Committee mobile App or on the required race committee form located near the regatta office.

19.4 [SP] After returning to shore on each scheduled racing day, a crew shall sign-in by the Race Committee mobile App or on the required race committee form located in the regatta office within the protest time limit.

19.5 A boat that retires from racing shall notify the race committee before leaving the racing area, or if that is not possible, shall notify the race office as soon as possible after returning ashore and shall complete a retirement declaration form at the race office before the expiry of the protest time limit.

19.6 In accordance with NoR 16, Berthing, boats shall return to and remain in their assigned berths.

19.7 Boats shall not sail into other course areas whilst the other course areas are racing. Boats not racing shall remain clear of boats that are racing and official boats.

19.8 When the race committee displays code flag "V" with repetitive sounds, all official and support boats shall monitor the race committee radio channel for search and rescue instructions.

19.9 Race Management VHF Channels: Alpha Team CH 71: Bravo Team CH 72: Charlie Team CH 73: Delta Team CH 77: Jury CH 15

20 [DP] [NP] REPLACEMENT OF CREW OR EQUIPMENT

20.1 Substitution of competitors will not be allowed without prior written approval of the race committee and shall comply with any restrictions in the Notice of Race.

20.2 Substitution of damaged or lost equipment will not be allowed unless approved by the race committee. Requests for substitution shall be made to the race committee at the first reasonable opportunity.

21 [DP] [NP] EQUIPMENT AND MEASUREMENT CHECKS

Equipment may be inspected at any time for compliance with the class rules and sailing instructions. When instructed by an event equipment inspector, a boat shall proceed immediately to a designated area for inspection.

22 [DP] [NP] EVENT ADVERTISING

Boats shall display required event sponsor advertising. The organizing authority will supply the advertising and instructions for their use.

23 OFFICIAL BOATS

23.1 Official boats will be marked as follows:

Equipment Inspection	Flag with letter M or Measurer
Judges and Umpires	White Flag with letter J
Media	Flag with letters Media
Race Committee	Flag with letter referring to course team "A" "B" etc
Rescue	Flag with letter referring to course team, "A" "B" etc
VIP	Flag with letters VIP
PRO	Flag with letters PRO

23.2 Actions by official boats, drones or helicopters shall not be grounds for requesting redress by a boat. This changes RRS 60.1 (b).

24 [DP] [NP] SUPPORT BOATS

Team leaders, coaches and other support persons shall stay outside areas where boats are racing from the time of the preparatory signal for the first class to start until all boats have finished or retired or the race committee signals a postponement, general recall or abandonment. Support Boat Regulations are detailed in SI Addendum "D".

25 [DP] [NP] TRASH DISPOSAL

As sailors, we seek to protect and restore our oceans and coastal waters. Boats shall not intentionally put trash in the water. Trash may be placed aboard support and race committee boats.

26 [DP] [NP] HAUL-OUT RESTRICTIONS

Keelboats shall not be hauled out during the regatta except with and according to the terms of prior written permission of the race committee.

27 [DP] [NP] DIVING EQUIPMENT AND PLASTIC POOLS

Underwater breathing apparatus and plastic pools or their equivalent shall not be used around keelboats between the preparatory signal of the first race and the end of the regatta.

28 [DP] [NP] RADIO COMMUNICATION

A boat shall neither make radio transmissions while racing nor receive radio communications not available to all boats, except in an emergency or when using equipment provided by the race committee. This restriction also applies to mobile telephones. Etchells shall also carry a VHF receiver capable of receiving transmissions on all race management channels.

29 PRIZES

Prizes will be awarded in accordance with the NOR

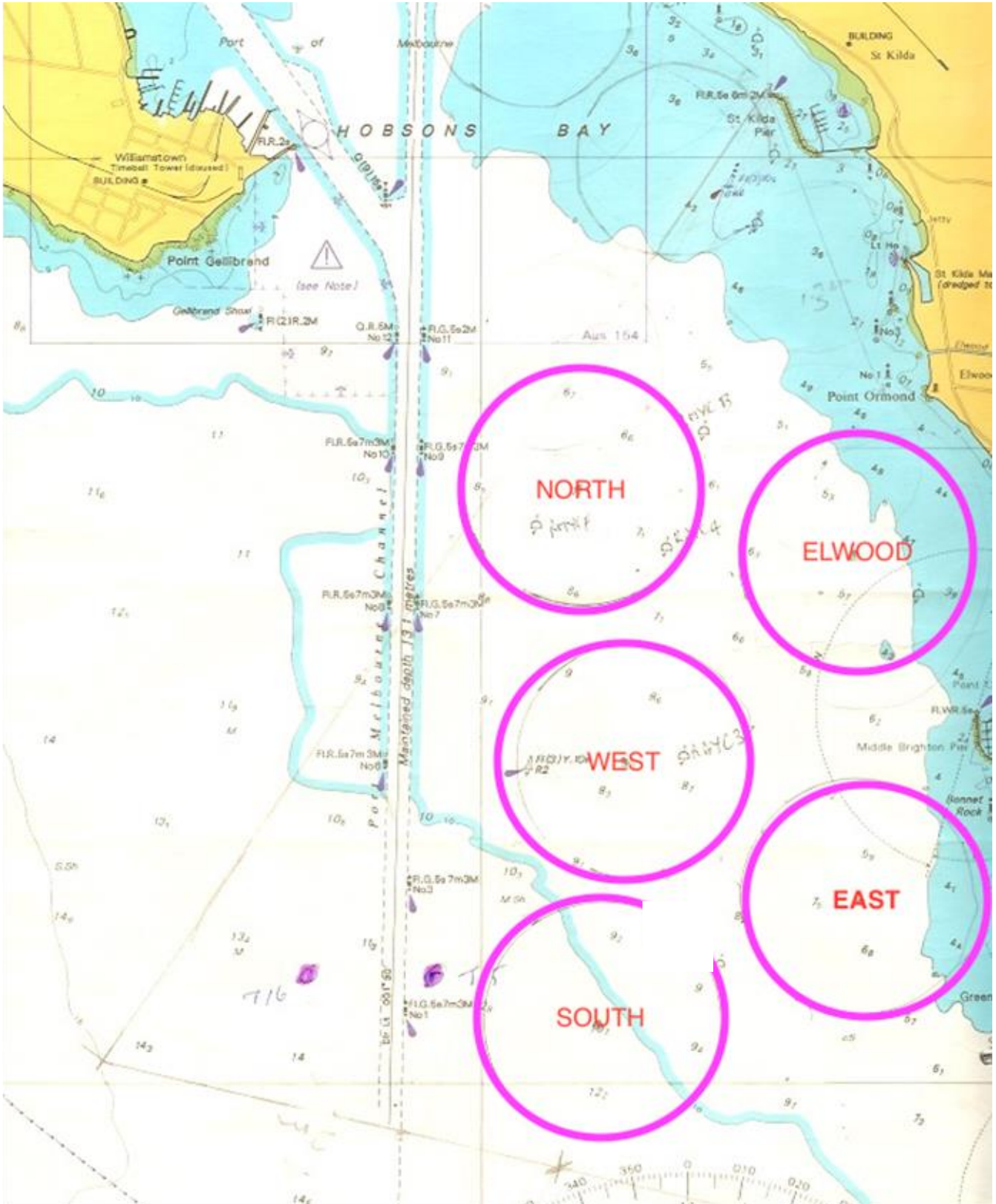
30 DISCLAIMER OF LIABILITY

Competitors participate in the regatta entirely at their own risk. See RRS 4, Decision to Race. The organising authority will not accept any liability for material damage or personal injury or death sustained in conjunction with or prior to, during, or after the regatta.

31 INSURANCE

Each participating boat shall be insured with valid third-party liability insurance with a minimum cover of AUD \$5 000,000 per incident or the equivalent.

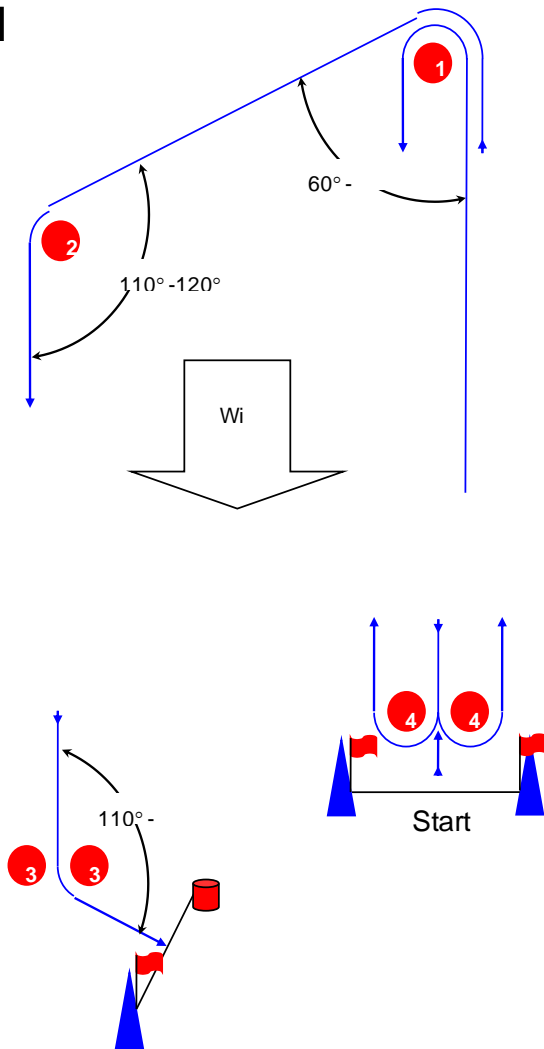
SI Addendum “A” – COURSE AREAS



SI Addendum “B” - COURSE ILLUSTRATIONS

Course Illustrations – Trapezoid separate finishing line

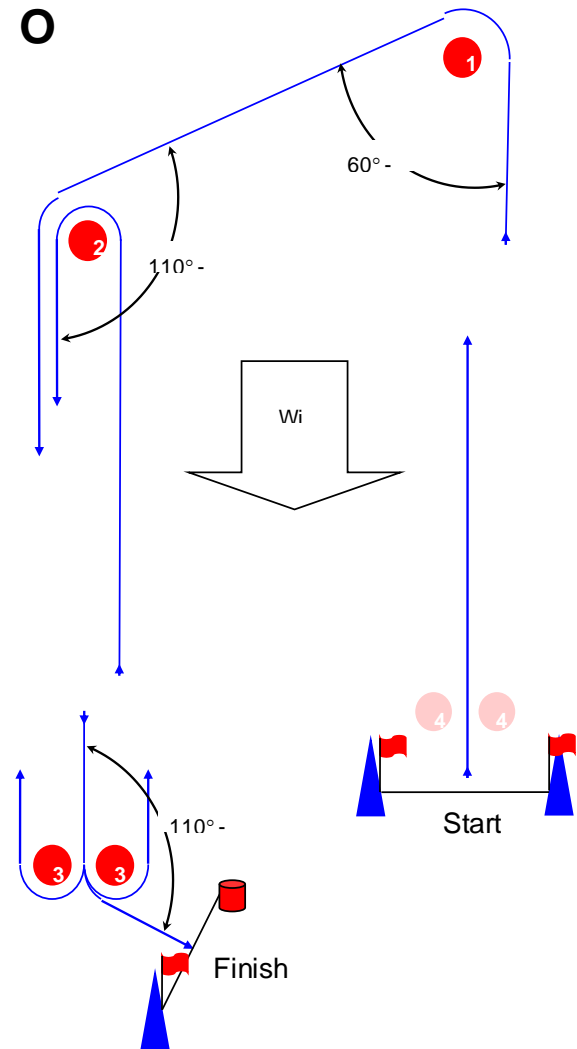
I



Course: Inner Trapezoid

Signal	Mark Rounding Order
I2	Start – 1 – 4s/4p – 1 – 2 – 3p – Finish
I3	Start – 1 – 4s/4p – 1 – 4s/4p – 1 – 2 – 3p – Finish
I4	Start – 1 – 4s/4p – 1 – 4s/4p – 1 – 4s/4p – 1 – 2 – 3p – Finish

O

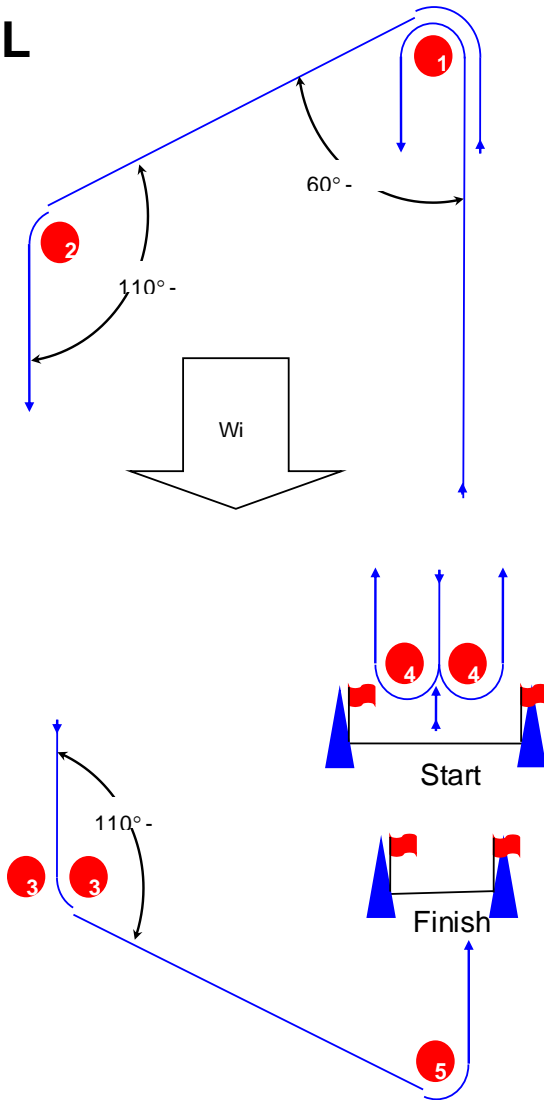


Course: Outer Trapezoid

Signal	Mark Rounding Order
O1	Start – 1 – 2 – 3p – Finish
O2	Start – 1 – 2 – 3s/3p – 2 – 3p – Finish
O3	Start – 1 – 2 – 3s/3p – 2 – 3s/3p – 2 – 3p – Finish
	Start – 1 – 2 – 3s/3p – 2 – 3s/3p –

Course Illustrations – Trapezoid with beat to finish. Different starting and finishing lines

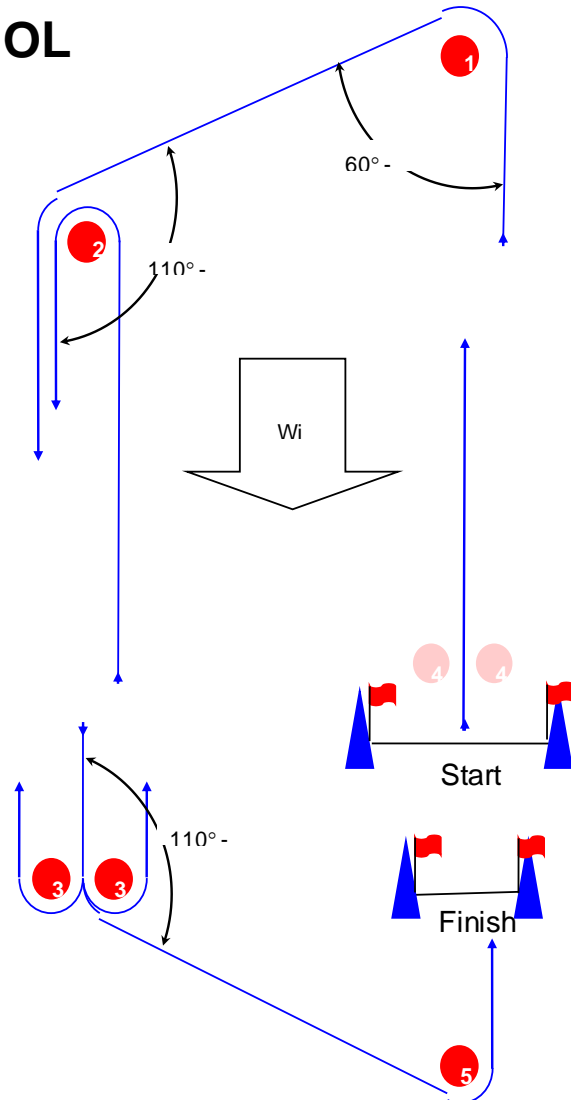
IL



Course: Inner trapezoid with beat to finish

Signal	Mark Rounding Order
IL2	Start – 1 – 4s/4p – 1 – 2 – 3p – 5 – Finish
IL3	Start – 1 – 4s/4p – 1 – 4s/4p – 1 – 2 – 3p – 5 – Finish
IL4	Start – 1 – 4s/4p – 1 – 4s/4p – 1 – 4s/4p – 1 – 2 – 3p – 5 – Finish

OL

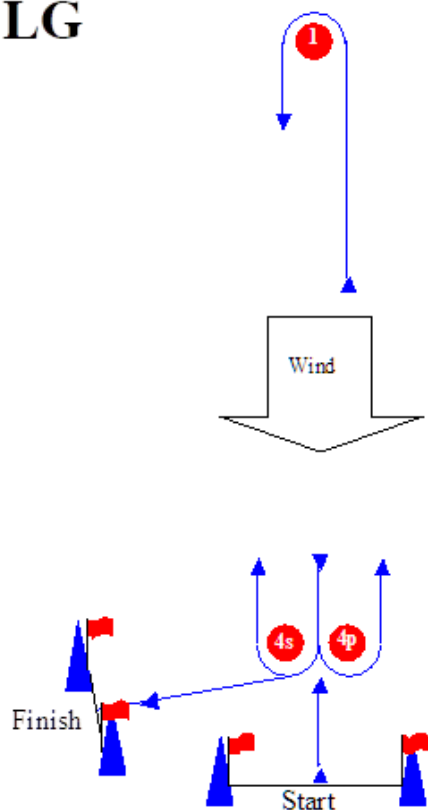


Course: Outer trapezoid with beat to finish

Signal	Mark Rounding Order
OL1	Start – 1 – 2 – 3p – 5 – finish.
OL2	Start – 1 – 2 – 3s/3p – 2 – 3p – 5 – Finish
OL3	Start – 1 – 2 – 3s/3p – 2 – 3s/3p – 2 – 3p – 5 – Finish
OL4	Start – 1 – 2 – 3s/3p – 2 – 3s/3p – 2 – 3s/3p – 2 – 3p – 5 – Finish

Course Illustrations – Windward Leeward with reaching finish

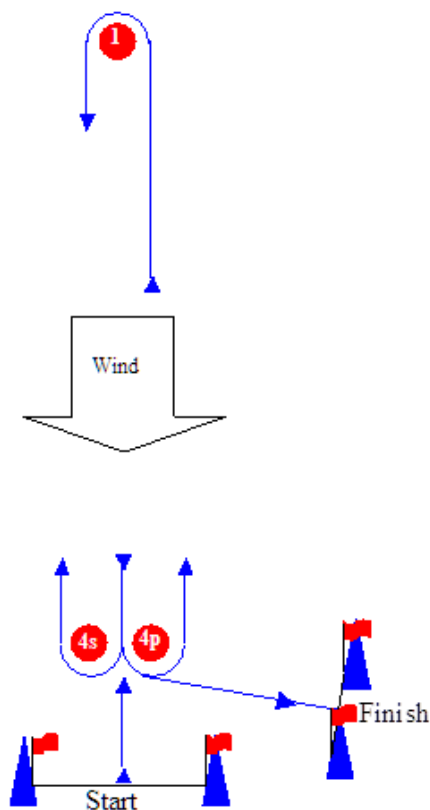
LG



Course: Finish after rounding 4s

Signal	Mark Rounding Order
LG2	Start – 1 – 4s/4p – 1 – 4s – Finish
LG3	Start – 1 – 4s/4p – 1 – 4s/4p – 1 – 4s – Finish
LG4	Start – 1 – 4s/4p – 1 – 4s/4p – 1 – 4s/4p – 1 – 4s – Finish

LR

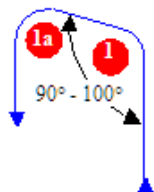


Course: Finish after rounding 4p

Signal	Mark Rounding Order
LR2	Start – 1 – 4s/4p – 1 – 4p – Finish
LR3	Start – 1 – 4s/4p – 1 – 4s/4p – 1 – 4p – Finish
LR4	Start – 1 – 4s/4p – 1 – 4s/4p – 1 – 4s/4p – 1 – 4p – Finish

LGA / LRA

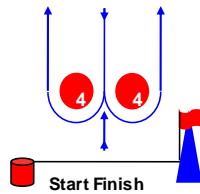
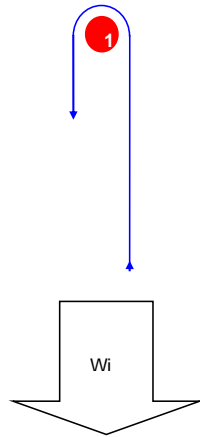
Course: Windward/Leeward with offset mark 1a



Signal	Mark Rounding Order
LGA2	Start – 1 – 1a – 4s/4p – 1 – 1a – 4s – Finish
LGA3	Start – 1 – 1a – 4s/4p – 1 – 1a – 4s/4p – 1 – 1a – 4s – Finish
LGA4	Start – 1 – 1a – 4s/4p – 1 – 1a – 4s/4p – 1 – 1a – 4s/4p – 1 – 1a – 4s – Finish
LRA2	Start – 1 – 1a – 4s/4p – 1 – 1a – 4p – Finish
LRA3	Start – 1 – 1a – 4s/4p – 1 – 1a – 4s/4p – 1 – 1a – 4p – Finish
LRA4	Start – 1 – 1a – 4s/4p – 1 – 1a – 4s/4p – 1 – 1a – 4s/4p – 1 – 1a – 4p – Finish

Course Illustrations – Windward Leeward

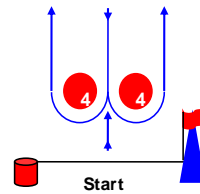
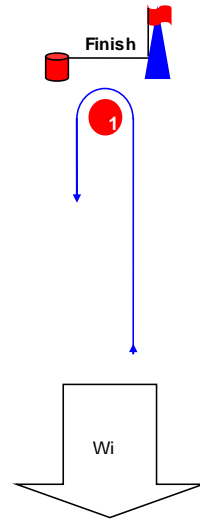
L



Course: Leeward Finish

Signal	Mark Rounding Order
L2	Start – 1 – 4s/4p – 1 – Finish
L3	Start – 1 – 4s/4p – 1 – 4s/4p – 1 – Finish
L4	Start – 1 – 4s/4p – 1 – 4s/4p – 1 – 4s/4p – 1 – Finish

W

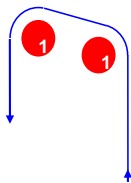


Course: Windward Finish

Signal	Mark Rounding Order
W2	Start – 1 – 4s/4p – Finish
W3	Start – 1 – 4s/4p – 1 – 4s/4p – Finish
W4	Start – 1 – 4s/4p – 1 – 4s/4p – 1 – 4s/4p – Finish

LA / WA

Course: Windward/Leeward with offset mark 1a



Signal	Mark Rounding Order
LA2	Start – 1 – 1a – 4s/4p – 1 – 1a – Finish
LA3	Start – 1 – 1a – 4s/4p – 1 – 1a – 4s/4p – 1 – 1a – Finish
LA4	Start – 1 – 1a – 4s/4p – 1 – 1a – 4s/4p – 1 – 1a – 4s/4p – 1 – 1a – Finish
WA2	Start – 1 – 1a – 4s/4p – Finish
WA3	Start – 1 – 1a – 4s/4p – 1 – 1a – 4s/4p – Finish
WA4	Start – 1 – 1a – 4s/4p – 1 – 1a – 4s/4p – 1 – 1a – 4s/4p – 1 – 1a – 4s/4p – Finish



SAIL MELBOURNE INTERNATIONAL
2017 – SAILING INSTRUCTIONS

SI ADDENDUM "C" - SCHEDULE OF RACES

Will be displayed on the Official Notice Board

SI ADDENDUM “D” – SUPPORT BOAT REGULATIONS

1 General

- 1.1 These Support Boat Regulations (SBR) shall apply at all times while the boat is at the venue (RBYC)
- Local marine regulations specify the safety equipment to be carried and conditions under which life jackets (PFD 1) are to be worn. A copy of the regulations is available at <http://www.transportsafety.vic.gov.au/maritime-safety/recreational-maritime/safety-equipment/safety-equipment-for-powered-vessels> and <http://www.transportsafety.vic.gov.au/maritime-safety/recreational-maritime/safety-equipment/personal-flotation-devices>
- 1.2 For the purposes of these regulations, a support boat includes any boat that is under the control or direction of a person who is or may provide physical or advisory support to an athlete, including the gathering of data that may be used at a later time.
- 1.3 The Organising Authority may inspect boats at any time to ensure that they comply with these regulations, and the person responsible for the boat shall facilitate such inspection.
- 1.4 An alleged breach of any of these regulations may be referred to the International Jury for a hearing. As a result of the hearing, the International Jury may instruct the Organising Authority to withdraw accreditation and access rights from the driver or person in charge, with or without the option of substitution, either for a specified period or for the remainder of the competition.
- 1.5 The Organising Authority may change these regulations at any time. Any changes will be posted on the Official Notice Board.
- 1.6 The Organising Authority may, at its discretion, refuse to register support boats not deemed to be suitable. Generally, open boats more than 4.0m and less than 7.5m in length and having minimal or no superstructure (cabin, coach house, bridge, etc) are considered suitable.
- 1.7 Support boats and designated drivers shall be registered at the Regatta Office either before leaving the venue by water for the first time or by 18:00 on the day before the first race of the Event that it is supporting, whichever is earlier.
- 1.7.1 Each boat shall be insured with valid third-party liability insurance with a minimum coverage of AUD\$10,000,000 (or equivalent) per incident.
- 1.7.2 Only accredited persons may be designated drivers.
- 1.7.3 The person registering the support boat shall confirm that:
- (a) a valid insurance certificate showing proof of third-party liability coverage as required by 1.7.1 has been obtained;
 - (b) each designated driver has a motorboat driving licence recognised by a national authority appropriate to that boat; and
 - (c) anyone who will be using a radio has an appropriate radio operation licence recognised by a national authority.
- 1.8 Support boats shall be marked with the applicable national sail letters (RRS G1.1) clearly displayed on both sides of the boat in strongly contrasting colours at all times while afloat. The minimum height for the letters shall be 200mm. The letters will not be provided by the Organising Authority.

2 Sailing Venue

- 2.1 Support boats shall use the designated slipway/area for launching. Once launched, trailers shall be moved immediately to the trailer park or as otherwise directed by the Organising Authority.
- 2.2 Only registered support boats will be allowed into the sailing venue. (Allocated berths or area will be provided at registration)
- 2.3 When not in use, support boats shall be appropriately berthed at the sailing venue in the allocated areas for support boats for the entire time that these SBR apply.
- 2.4 Support boats shall not use the dinghy launching slipways or keelboat pontoons for any purpose whatsoever, including mooring, launching and retrieval, and loading and unloading of equipment.

3 Safety

- 3.1 Support boats shall carry on board:
 - (a) life jackets / buoyancy aid for all passengers and the driver;
 - (b) first-aid kit;
 - (c) VHF radio;
 - (d) device for making a sound signal;
 - (e) compass;
 - (f) adequate anchor and tackle for conditions and depth;
 - (g) tow rope (minimum 15m long and 10mm thick);
 - (h) operational engine kill cord (also known as a safety lanyard or automatic engine immobiliser);
 - (i) hand pump or bailer;
 - (j) knife; and
 - (k) any additional safety equipment required by local maritime law.

It is recommended that life jackets be worn at all times when afloat. It is strongly recommended that the kill cord is used at all times when the engine is running. Refer to Instruction 1.1 for use of life jackets

- 3.2 The maximum plated / certified passenger limits for the boat shall never be exceeded.
- 3.3 Team leaders are responsible for overseeing the safe operation of their support boats on the water, including knowledge of who is afloat and ensuring their safe return to the venue.
- 3.4 At all times, the registered driver(s) of a support boat shall comply with directions given by a Race Official. In particular, this includes assisting in rescue operations when requested to do so.
- 3.5 Support boats shall comply with local harbour and marina regulations, including speed limits.

4 General Restrictions

- 4.1 The registered driver(s) of a support boat will be responsible for the control of the boat at all times and will be held responsible for any inappropriate behaviour, dangerous actions or improper practices, or actions affecting the fairness or safety of competition.
- 4.2 Support boats shall not leave any device, piece of equipment, buoy, marker or similar item permanently in the water. Temporary use of floating objects is allowed for current measurement. These objects shall be removed as soon as the measurement has been taken.
- 4.3 Support boats shall take particular care to minimise their wash when transiting the course areas. Support boats shall not interfere with boats racing or official boats, or create a wake that affects boats racing.

5 Race Area Restrictions

- 5.1 Support boats shall not be positioned:
 - 5.1.1 Closer than 50 metres of any boat racing
 - 5.1.2 Within 50 meters of the starting line and marks from the time of the preparatory signal until all boats have left the starting area, or the race committee signals a postponement, general recall or abandonment.
 - 5.1.3 Between any boat racing and the next mark of the course.
 - 5.1.4 Between the inner and outer trapezoid courses when boats are racing on both courses.
 - 5.1.5 Within 50 meters of any mark of the course while boats are in the vicinity of that mark.
 - 5.1.6 Within 50 meters of the finishing line and marks while boats are finishing.
- 5.2 In addition, support boats that are motoring above 5 knots shall remain at least 150 meters from any boat racing.
- 5.3 Additional restrictions apply to medal races and will be posted on the official notice board.
- 5.4 When the race committee displays flag V with repetitive sounds, all official and support boats shall monitor the race committee radio channel for search and rescue instructions.



SAIL MELBOURNE INTERNATIONAL

2017 – SAILING INSTRUCTIONS

SI Addendum “E” - MARKS

10.1 Marks will be as designated in table below:

10.2 The following classes will sail the designated course using the inner course buoys as described in the table. 29er, Sabre, Laser 4.7, Int 420.

Course Area	South	East	West	Elwood
Start	Race Vessel	Race Vessel	Race Vessel	Race Vessel
Start (pin)	Race Vessel Or Blue Buoy	Race Vessel Or Yellow Buoy	Race Vessel or Pink Buoy	Race Vessel Or Orange Buoy
Finish	Race Vessel	Race Vessel	Race Vessel	Race Vessel
Finish (pin)	Black/White Check Buoy	Black/White Check Buoy	Black/White Check Buoy	Black/White Check Buoy
Mark 1	Blue (outer) Buoy Orange (inner) Buoy	Yellow Buoy	Pink (outer) Buoy Red (inner) Buoy	Orange Buoy
Marks 2,	Blue (outer 2) Orange (inner 2) Buoy	Yellow Buoy		Orange Buoy
Mark 3	Blue	Yellow		Orange
Mark 4 (gate) Mark 5	Blue Buoy	Yellow Buoy	Pink Buoy	Orange Buoy
Change of Course	Blue (outer) Buoy or Orange (inner) Buoy with Black Band	Yellow Buoy with Black Band	Pink (outer) Buoy or Green (inner) Buoy with Black Band	Orange Buoy with Black Band
Offset Mark 1a			Orange (outer) Yellow (inner)	